

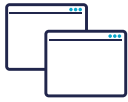
DATA SHEET



ivalua

Invoicing

Electronic and efficient all the way



ELECTRONIC FROM DAY ONE

No matter the format, we can move your invoices to digital immediately, no more paper or manual processes.



FASTER AND TOUCHLESS PROCESSING

Reduce invoice cycle time and automatically match invoices for higher straight-through processing and fewer exceptions.



HIGH SUPPLIER ADOPTION

Get all your suppliers onboard, create profiles on our network for up-to-date supplier information and lower inquiries.

Invoicing

eInvoicing

Invoice Data
Capture

Accruals

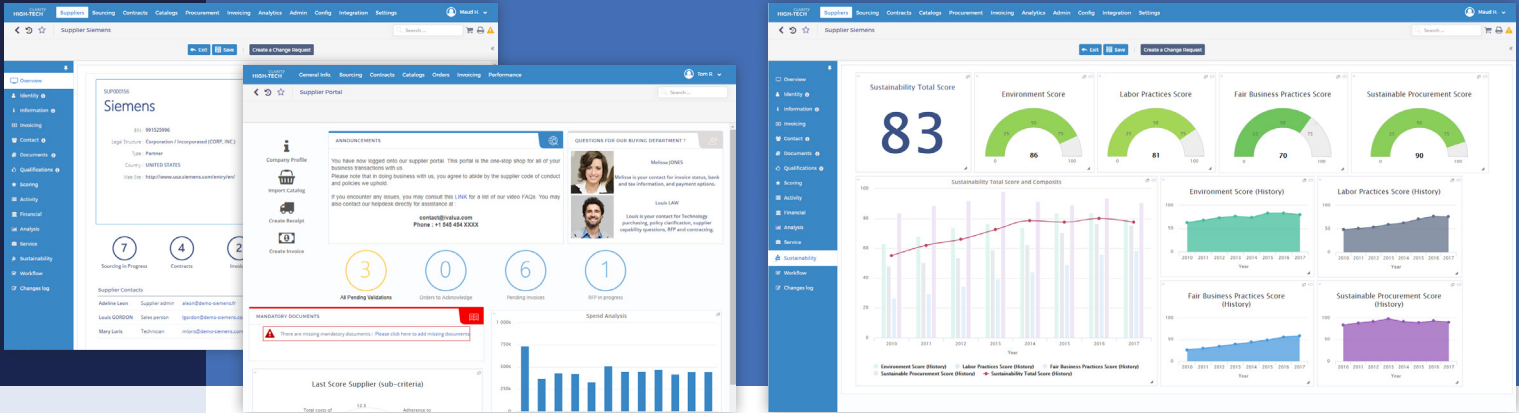
Expenses

Early Payments



DATA SHEET

Invoicing



eInvoicing

- ✓ **Accept any format**
Receive invoices through PO-flip, receipt-flip, online entry or by integration via EDI/cXML or integrated scan/OCR solutions.
- ✓ **Business rules to minimize exceptions**
Invoice issues are fixed by suppliers, requisitioners or buyers before submitting to AP. Built-in rules (e.g., 2 and 3-way match) ensure more touchless processing.
- ✓ **Handle any complexity and compliance**
Configure complex approval workflow with price and quantity exceptions. Manage accounting for different ledgers and taxes.
- ✓ **Reduce inbound inquiries**
Suppliers have access to our portal giving them a view into their transaction status and a lot more.

Make any invoice digital

- ✓ **Digitize paper and PDF instantly**
Capture and digitize data from PDF or scanned invoices instantly using OCR and machine learning.
- ✓ **Validate invoice data prior to processing**
Have suppliers or AP validate extracted invoice data with supplier information, PO or receipts and trigger onboarding for any new suppliers.
- ✓ **Automated, rules driven workflow**
Invoices matched appropriately are processed straight-through or else routed automatically based on workflow configuration.

Invoice Data Capture

Accruals

Book accruals for goods and services not fully received or invoiced

- ✓ **Accrual reporting**
Report on accruals for invoices without receipts (and vice versa).
- ✓ **End-of-period visibility**
Enhance accounting and finance reporting with detailed backup for end-of-period accrual “wash” transactions.
- ✓ **Integrated to your financial systems**
Use an accounts payable interface to manage the accounting allocations of invoice lines, accruals logic for receipts and voucher details.

Expenses

Track approvals for travel and manage expense reporting

- ✓ **Save precious time**
Automate the capture and routing of expense reports, saving precious time.
- ✓ **Stay compliant**
Ensure better compliance with online forms and guidelines for individual users.
- ✓ **Link to corporate cards**
Upload from banks for card based expenses, leveraging Level 3 data for correct classification and auto-compliance validation.

Early Payments

Maximize those supplier discounts

- ✓ **Involve suppliers early**
Present options for early payment discounting to suppliers with reconciled invoices or enable default plans.
- ✓ **Involve Treasury**
Manage maximum cash available per day for early payments.
- ✓ **Tailor your early payment program**
Tailored early payment programs for different supplier segments based on region, industry, etc.
- ✓ **Supplier intel**
Collect financial insights into suppliers and their cash positions.